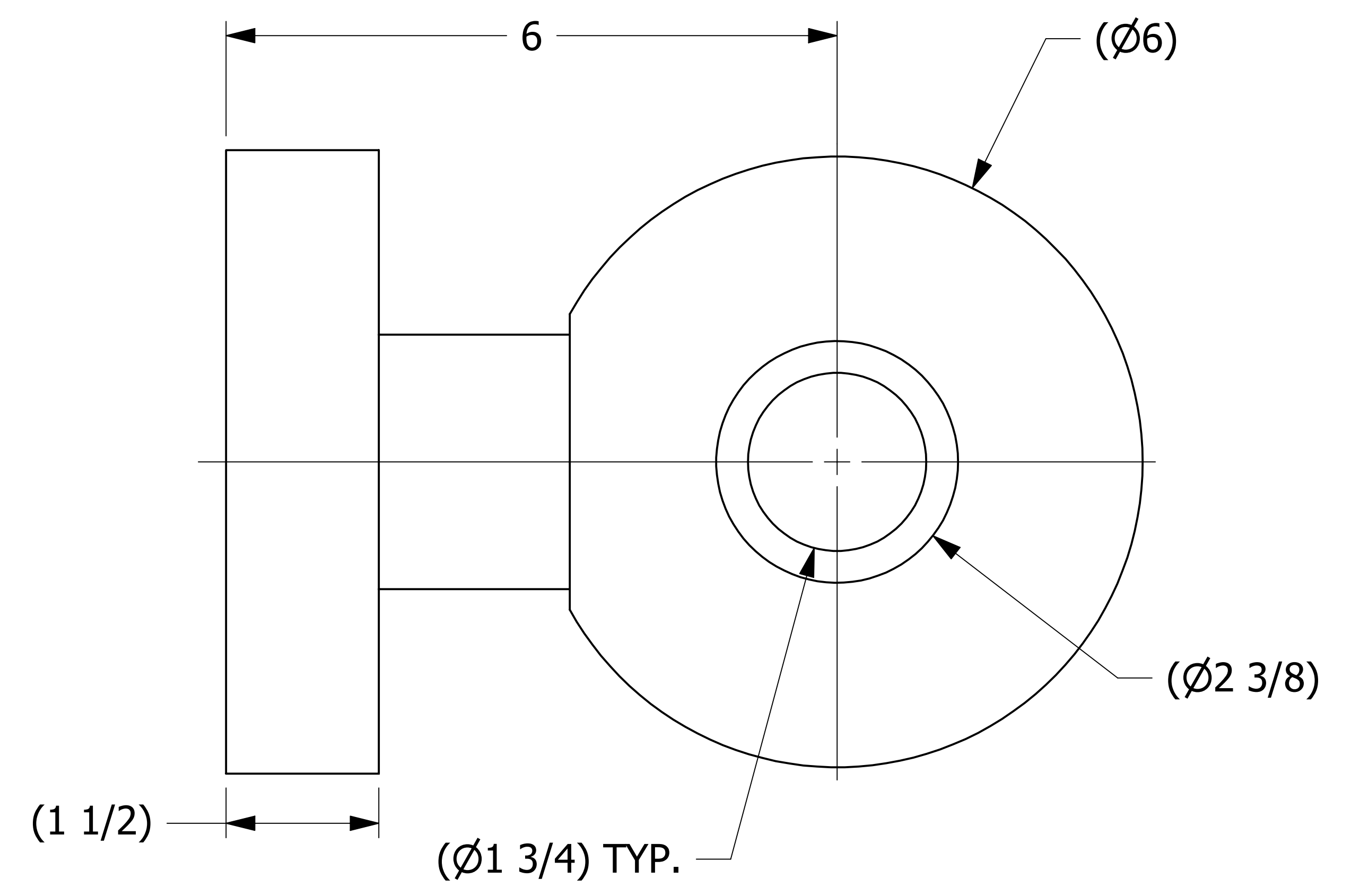
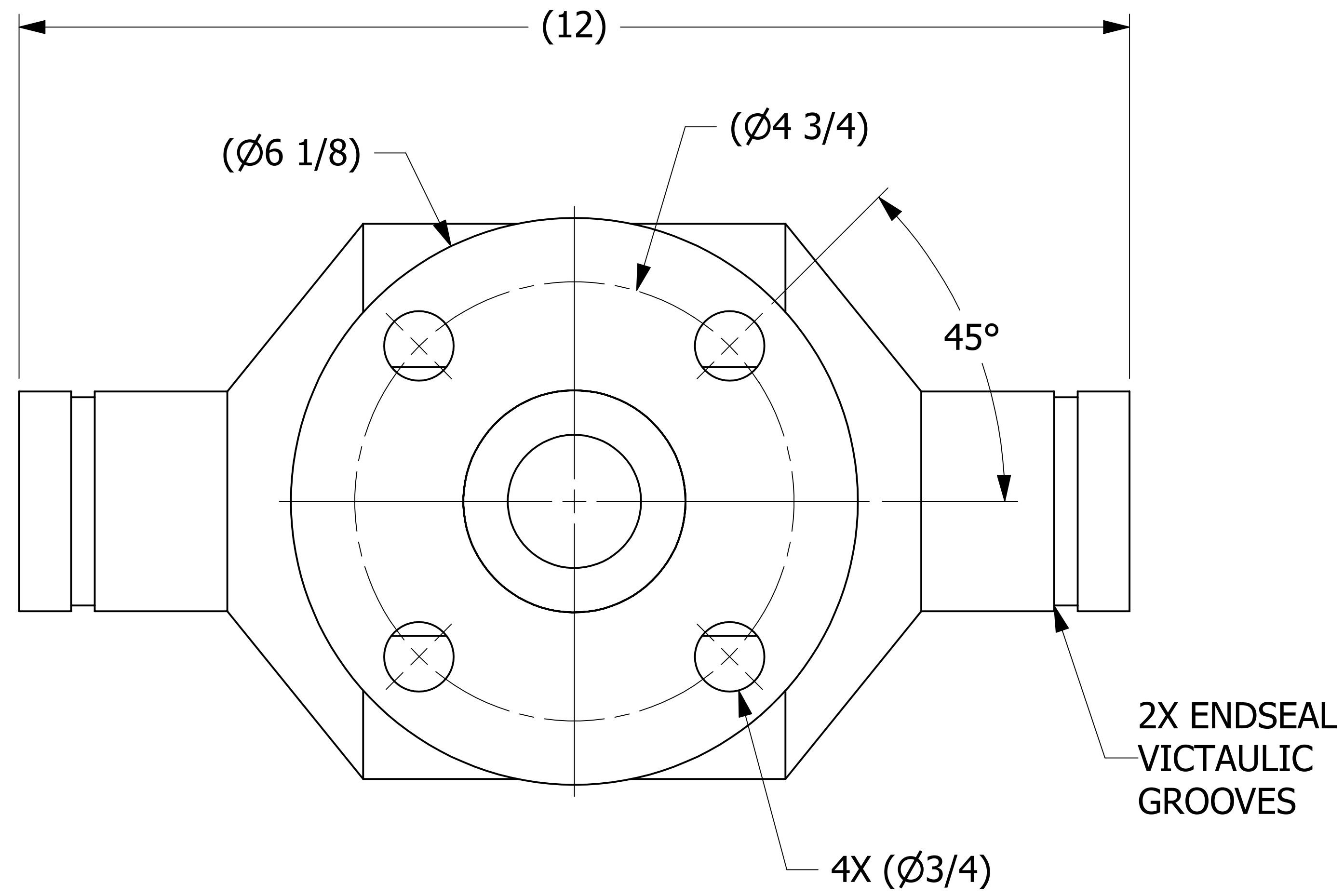


SALES DRAWING

SALES DRAWING



NOTE:
SOLD TO WORLEY WELDING ONLY.

E	GS	11-19-12	UPDATED TITLE BLOCK, DIMS., AND VIEWS.
D	VD	07-27-11	PRESSURE MARKING NOTE ADDED
C	VD	09-09-10	REPLACED HS618FL W/ HS2FLGS. REV. NOTES.
B	CHL	1-21-10	REPLACED HS2DTFL2 W/HS618FL
A	PJG	9-28-09	NEW PART ADDED TO SYSTEM
REV	BY	DATE	DESCRIPTION

UNLESS OTHERWISE SPECIFIED DIMENSIONAL TOLERANCES FRACTIONAL: ±1/16 X.XX: ±.03 X.XXX: ±.015 ANGULAR: ±1° DEBURR ALL SHARP EDGES. ALL MACHINED SURFACES TO HAVE A 125 RMS FINISH UNLESS NOTED OTHERWISE. THIRD ANGLE PROJECTION	DRAWN BY:	CHL
	CHECKED BY:	PJG
	PROTOTYPE BY:	CHL
	PROTOTYPE DATE:	5/14/2009
	APPROVED FOR PRODUCTION BY:	PJG
	PRODUCTION DATE:	9/28/2009

SALCO PRODUCTS, INC.

PART NAME: **PIPE TEE 2"**

MATERIAL: **SEE BOM**

PROJECT #: **090428** SHEET #: **1 OF 1** SCALE: **1:1**

DRAWING #: **D26795** PART #: **HS2PT1**

THIS PRINT, PROPERTY OF SALCO PRODUCTS INC. CONTAINS PROPRIETARY INFORMATION AND MUST NOT BE COPIED, REPRODUCED, OR USED DETRIMENTALLY TO OUR INTEREST.